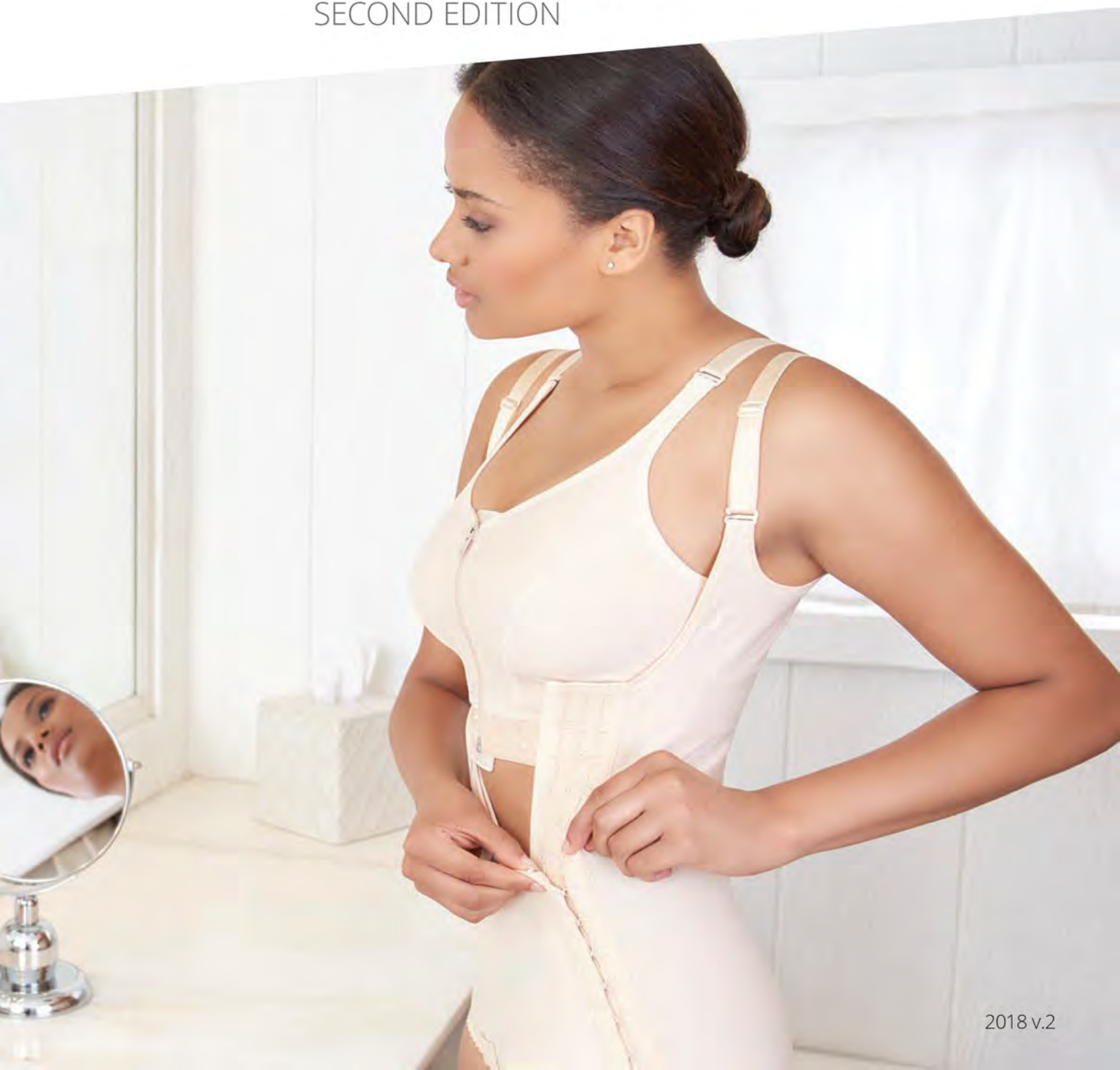




Certain products shown may not be
currently available from SCM Products Inc.
For more information, please contact us at
1-888-710-4697, or via email at
info@scmproductsinc.com

Product Catalog 2018

SECOND EDITION





THE MARENA GROUP LLC

Since 1994, Marena has been dedicated to advancing the effective use of medical-grade compression through research, innovation, design and manufacturing of garments for long-term wellness benefits. Our mission is to help patients around the world recover in comfort and confidence.



Table of Contents

About Marena Compression.....	4
-------------------------------	---

New Patented Drain Bulb Management	8
--	---

Women's Collections

Breast Care & Bras.....	10
-------------------------	----

Vests & Sleeves.....	21
----------------------	----

Bodysculpting Garments	25
------------------------------	----

Men's Collections

Vests	37
-------------	----

Tops.....	39
-----------	----

Bodysculpting Garments	40
------------------------------	----

Unisex Collections

Binders	44
---------------	----

Facial Masks.....	47
-------------------	----

Info & Sizing

Size Charts	50
-------------------	----

Garment Care & Fabric	54
-----------------------------	----

How to Order	55
--------------------	----

Marena is the Global Leader in Medical-Grade Compression

For over 20 years, Marena has been the global leader and innovator in comfortable medical-grade compression garments.

The Marena Difference

Superior Fabric and Comfort

- Patented 4-way stretch fabric
- Rigorous fit and design process for optimal compression and comfort
- Marena brand products are recognized as Class 1 medical devices

Constant Innovation

- Leading-edge designs and product solutions
- Collaboration with leading medical practices
- Outperforms the competition in compression strength, comfort and moisture control

Best Customer Service

- Personal service for help with sizing and product information
- Highest quality US manufacturing
- Just-in-time manufacturing and on-time delivery options
- Global distribution to over 70 countries



Marena Recovery offers exclusive, patented medical-grade compression garments to **help recovery and ensure comfort**. Our fabric, design, and fit make a garment that outperforms the competition and delivers the best results.

Marena Recovery is preferred by 8 out of 10 patients over competitor brands.

Clinically Tested, Proven Results

The benefits of compression to the body—found both in clinical trials, and from actual patients—may reduce swelling and bruising, and help increase support for muscles, joints and skin. These benefits help patients return to their daily activities faster.

Primary Medical Benefits

- Helps reduce swelling
- Helps reduce pain
- Helps reduce bruising
- Helps support the skin during healing to improve softness and smoothness

Innovative Design

All Marena products are engineered using special proprietary algorithms paired with advanced pattern making techniques and processes that cater to varying shapes and needs of the body within one piece of apparel.

- Consistent, long-lasting compression
- 4-way stretch
- No-run fabric
- Clean-cut finish to prevent binding
- Easily adjustable to changes in swelling

Backed by Science

"Pressure therapy appears to be of utmost importance to achieve predictable aesthetic results. It considerably reduces edema and acts as a guide to control skin shrinkage in a desired manner, as well as distributing scar tissue to minimize the potential for 'bulges'.

– Dr. Yves-Gerard Illouz, MD

Body Sculpturing by Lipoplasty, a Clinical Study on Post-Operative Compression Therapy

The Recovery Journey



Comfort Equals Compliance

The healing process after procedures that cause trauma to the body, whether surgical or minimally invasive, lasts an average of 12 weeks, and has distinct stages.

We consider the body's healing process and how to maximize comfort and compliance. Doctors can help their patients' recovery by providing Marena garments for all steps.

Marena Recovery medical-grade compression garments help improve comfort and encourage consistent use of compression through each step of healing.

"Compression essentially is an external force that applies to the area of trauma, surgical trauma in this case. And this external compression promotes the flow of tissue fluid that naturally accumulates in an area of surgical trauma back to the general circulation through the lymphatic channels."

– Dr. Paul Fortes, MD
Board-Certified Plastic Surgeon, Houston, TX



1 Heal In Comfort

1-4 weeks after surgery

Step One garments are easy to get on, and help improve comfort and compliance. Our garments stay comfortable to wear 24/7, even during sleep.

FABRIC: Marena's patented 4-way stretch fabric

FIT: Easy to put on and adjust to fluctuations in swelling

FEATURES: Adjustable closures
Adjustable shoulder straps
Open crotch



2 Recover With Confidence

4-12 weeks after surgery

Step Two garments help patients to continue the recovery benefits when they get in their new size. These garments work well under clothes, stay soft and stretch for full range of movement.

FABRIC: Marena's patented 4-way stretch fabric

FIT: Comfortable under clothes, typically smaller size needed

FEATURES: Step-in, pull on/pull off
Smooth finish with comfort seams
Open or accessible crotch

3 Dress With Compression

Post-Recovery

Marena Shape and Marena Sport lines offer continued benefits post-recovery, with styles that are comfortable under clothes and provide all-day compression benefits.

FABRIC: Marena's patented 4-way stretch fabric

FIT: Curvy and Straight fits available to accommodate all body types

FEATURES: Smooth finish with comfort seams
Comfortable under clothes
Closed crotch



Garments with Drain Bulb Management

New Patent Pending Designs

For procedures where drainage and patient monitoring is critical, Marena Recovery has launched bras and unisex vest solutions with a patent-pending adjustable drain bulb management system.

Surgeons can use our location for drainage tubes or cut their own. The patient can adjust the movable pouch system to keep the drain bulb in place and stay comfortable during Step One recovery. Our patented fabric with advance moisture wicking can help control odors and prevent irritation.

Step 1

Typical Medical Use:

Cardio-thoracic surgery, mastectomy/reconstruction mammoplasty, breast reduction

Available Coverage:

Chest/bust, abdomen, back

Features

- Patent Pending elastic band system to hold drain bulb pouches in multiple positions
- Velcro pouches that can be repositioned
- No-run fabric allows surgeon to cut additional holes for tubing
- Comfortable medical-grade compression
- Adjustable shoulder straps
- Moisture-wicking fabric with Silvadur™ to help control odors



Garments with Drain Bulb Management

Points of Measure: Chest/Bust

Size charts on pages 51 and 53



B19 STEP 1

Patent pending drain bulb management system with four plastic rings to hold drain pouch.

- Underarm opening for drainage tube
- Multiple band positions on front and side for comfortable pouch and drain bulb placement
- 4 smooth plastic rings
- Adjustable straps
- Soft comfort elastic band

UV/CP STEP 1

Heal in comfort. This vest features removable loops for drain tubes and POUCH2 for drain bulbs.

- Front zipper closure
- Adjustable shoulder closure
- Soft 3-inch elastic band
- Includes POUCH2
- 4 smooth plastic rings
- Multiple band positions on front and side for comfortable pouch and drain bulb placement

POUCH2 STEP 1

Includes one pair of pouches for B19 and UV/CP. Holds a single 400cc drain bulb reservoir.

Sizes: 3032–5456

Available in: **H** **B**



Back Detail



Strap Detail

Sizes: 2XS–4XL

Available in: **H** **B** **C** **M**



Back Detail



Band Detail

Sizes: U

Available in: **H** **B**



Pouch Detail

Breast Care and Bras

Marena Recovery Bras and Breast Care garments are designed to offer the most comfortable support. Adjustable features help ensure optimal control of swelling and the ability to reposition for a perfect fit.

Classic Bras.....	11-13
Seamless Cup Bras.....	14-15
Bras with Pockets.....	16-17
Step 3 with Marena Shape.....	18-19
Stabilizers and Wraps.....	20

Steps 1 & 2

Typical Medical Use:

Mastectomy, mastopexy, reduction, augmentation and reconstruction mammoplasty

Available Coverage:

Chest, abdomen, back, upper back and arms



Classic Bras

Under Bust	Size
24-28 IN 61-71 CM	30 32
28-32 IN 71-81 CM	34 36
32-36 IN 81-91 CM	38 40
36-40 IN 91-102 CM	42 44
40-44 IN 102-112 CM	46 48
44-48 IN 112-122 CM	50 52
48-52 IN 122-132 CM	54 56

Seamless Cup Bras

Under Bust	Size		Bust				
27-29 IN 69-74 CM	32	→	31 IN 79 CM	32 IN 81 CM	33 in 84 CM	34 IN 86 CM	35 IN 89 CM
29-31 IN 74-79 CM	34	→	33 IN 84 CM	34 IN 86 CM	35 IN 89 CM	36 IN 91 CM	37 IN 94 CM
31-33 IN 79-84 CM	36	→	35 IN 89 CM	36 IN 91 CN	37 IN 94 CM	38 IN 97 CM	39 IN 99 CM
33-35 IN 84-89 CM	38	→	37 IN 94 CM	38 IN 97 CM	39 IN 99 CM	40 IN 102 CM	41 IN 104 CM
35-37 IN 89-94 CM	40	→	39 IN 99 CM	40 IN 102 CM	41 IN 104 CM	42 IN 107 CM	43 IN 109 CM
37-39 IN 94-99 CM	42	→		42 IN 107 CM	43 IN 109 CM	44 IN 112 CM	45 IN 114 CM
39-41 IN 99-104 CM	44	→		44 IN 112 CM	45 IN 114 CM	46 IN 117 CM	47 IN 119 CM
			A	B	C	D	E
Cup Size							

Classic Bras

Points of Measure: Underbust

Size charts on page 10



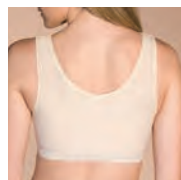
B

Support your natural shape and protect your skin with a simple design that provides support and comfort. Fits A-C cups.

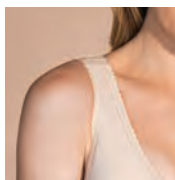
- Cup shirring
- 3-row hook & eye front closure and shoulder strap
- Soft trim elastic band

Sizes: 3032-5456

Available in: **H** **B**



Back Detail



Strap Detail



B/ISB

Recover in comfort with a design that is dedicated to support through Step One. Fits B-D cups.

- 3-row hook & eye front closure and shoulder strap
- Horizontal cup seam
- Implant stabilizer band

Sizes: 3032-5456

Available in: **H** **B**



Back Detail



Band Detail



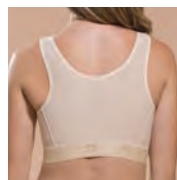
B2

Recover with confidence with this design that provides total adjustability and comfort that lasts all day. Fits A-C cups.

- 3-row hook & eye front closure and shoulder strap
- Cup shirring
- Soft comfort elastic band

Sizes: 3032-5456

Available in: **H** **B**



Back Detail



Strap Detail

Classic Bras

Points of Measure: Underbust

Size charts on page 10



BA

Recover in comfort and help stabilize the skin through each step of healing, with support and adjustability through full recovery. Fits C-E cups.

- Vertical cup seam & shirring
- Soft comfort elastic band
- 3-row hook & eye front closure
- 4-row hook & eye back closure
- Slide-adjustable shoulder strap



BNRZ

Maximize adjustability, implant stability and comfort with a design that helps recovery throughout the healing process.

- Padded hook & eye zipper closure
- Cup pocket
- Vertical cup seam
- Soft comfort elastic band
- Slide-adjustable shoulder strap



BR

Protect the skin with full-coverage support and adjustability during each step of recovery. Fits A-C cups.

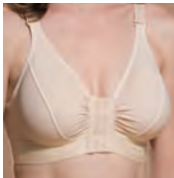
- Vertical cup seam
- Cup shirring
- Wide shoulder strap with velcro closure
- 3-row hook & eye front closure
- Soft trim elastic band

Sizes: 3032-5456

Available in: **H** **B**



Back Detail



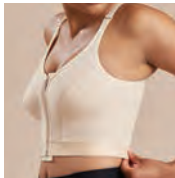
Front Detail

Sizes: 3032-5456

Available in: **H** **B**



Back Detail



Side Detail

Sizes: 3032-5456

Available in: **H** **B**



Back Detail



Strap Detail

Classic Bras

Points of Measure: Underbust

Size charts on page 10



BNVL

Protect the skin and recover in comfort with adjustable support during each step of healing.

- Slide adjustable shoulder strap
- Removeable fabric loops for drain bulb system
- Velcro front closure
- Soft comfort elastic band

Sizes: 3032–5456

Available in: **H** **B**



Back Detail



Pouch Detail



B19

Patent pending drain bulb management system with four plastic rings to hold pouch.

- Underarm opening for drainage tube
- Adjustable straps
- Soft comfort elastic band
- 4 smooth plastic rings
- Multiple band positions on front and side for comfortable pouch and drain bulb placement

Sizes: 3032–5456

Available in: **H** **B**



Back Detail



Pouch Detail

Seamless Cup Bras

Points of Measure: Bust, Underbust

Size charts on page 10



B01G

Provides comfort, support and total adjustability while softening the skin and optimizing recovery.

- 3-row hook & eye shoulder strap
- 3-row hook & eye front closure
- Full back coverage
- Soft comfort elastic band



B09Z

Designed to ensure comfort and stability, and to maximize strap adjustability.

- Slide-adjustable shoulder strap with cross option
- Front zipper closure
- Soft comfort elastic band



B11

Heal in comfort with ease of movement, and adjustability, for a flexible fit and natural shape.

- Slide-adjustable strap
- 3-row hook & eye front closure
- Soft comfort elastic band

Sizes: 32A–44E

Available in: **H** **B**



Back Detail



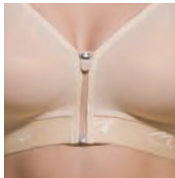
Strap Detail

Sizes: 32A–44E

Available in: **H** **B**



Back Detail



Front Detail

Sizes: 32A–44E

Available in: **H** **B**



Back Detail

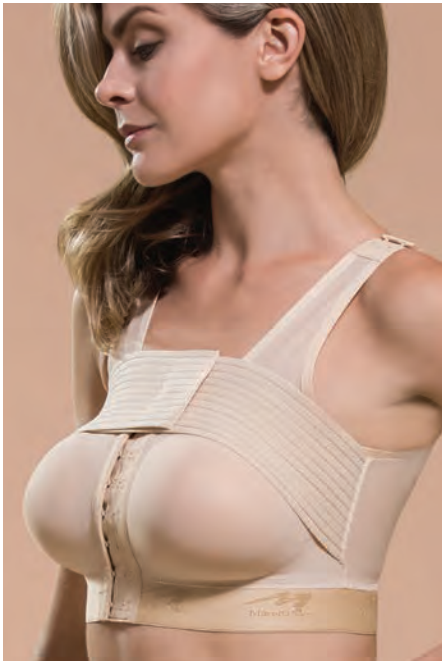


Strap Detail

Seamless Cup Bras

Points of Measure: Bust, Underbust

Size charts on page 10



B15

Designed for support and stability, through flexible fit and natural shape, to help patients recover in comfort through Step One.

- Implant stabilizer band
- 3-row hook & eye front closure and shoulder strap
- Soft comfort elastic band



B16

Recover in comfort with full coverage and easy adjustability for comfortable support and shaping.

- Wide shoulder strap with 3-row hook & eye closure
- 3-row hook & eye front closure
- Soft comfort elastic band



BB

A simple and discreet design that minimizes movement and provides wire-free support, with a hidden implant support band.

- Hidden implant stabilizer band
- Strapless
- Front zipper closure
- Soft comfort elastic band

Sizes: 32A–44E

Available in: **H** **B**



Back Detail



Strap Detail

Sizes: 32A–44E

Available in: **H** **B**



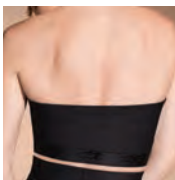
Back Detail



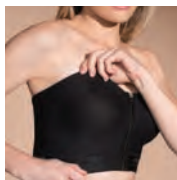
Strap Detail

Sizes: 32A–44E

Available in: **H** **B**



Back Detail



Strap Detail

Pocket Bras

Points of Measure: Bust, Underbust

Size charts on page 10



B01GP

Provides cup pocket support, plus total adjustability and coverage, to recover in comfort.

- Seamless cup with inner pocket
- Full back coverage
- Hook & eye shoulder strap
- 3-row hook & eye front closure
- Soft comfort elastic band

Sizes: 32A–44E

Available in:



Back Detail



Side Detail



B16P

Recover in comfort with full coverage and cup pocket support that provides a natural shape.

- Seamless cup with inner pocket
- Wide shoulder strap with 3-row hook & eye closure
- 3-row hook & eye front closure
- Soft comfort elastic band

Sizes: 32A–44E

Available in:



Back Detail



Pocket Detail

Pocket Bras & Bra Pads

Points of Measure: Bust, Underbust

Size charts on page 10



B2P

Maximize adjustability with cup pocket support and comfort during each step of recovery.

- Cup shirring with inner pocket
- Shoulder strap
- 3-row hook & eye front closure
- Soft comfort elastic band

Sizes: 3032–5456

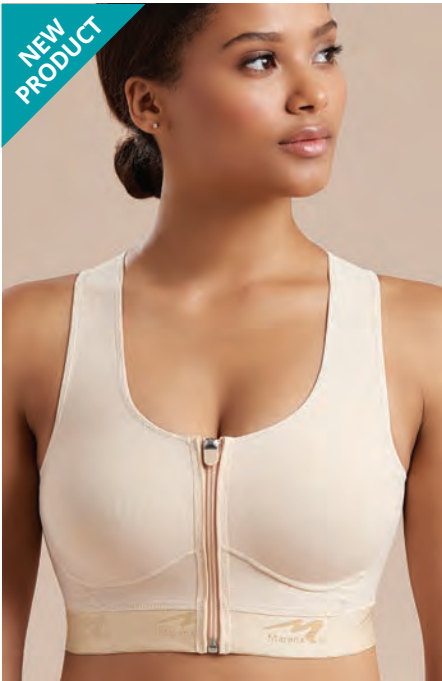
Available in: **H** **B**



Back Detail



Side Detail



804ZP

An easy-on bra with inner cup pockets designed for flexible fit, wire-free lift, and ultra-comfortable support.

- Seamless cup with inner pockets
- Keyhole back
- Front zipper closure
- Soft comfort elastic band
- Use Women's Recovery Size Chart on page 51

Sizes: 2XS–4XL

Available in: **H** **B**



Back Detail



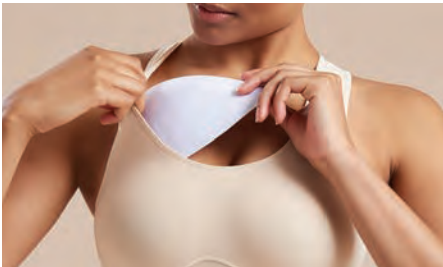
Pocket Detail



Mastectomy Pad

Style | Pad-Mastectomy

Recover with confidence. This bra pad provides natural shaping and support following a breast reduction or mastectomy procedure. **Sizes:** A-D



Nursing Pad

Style | Pad-Nursing

Nurse in comfort with this soft, absorbent pad that provides cushioning and protection against leaks and stains. **Size:** Universal



Modesty Pad

Style | Pad-NoShow

Shape and smooth with this discreet bra pad designed for no-show coverage and continued comfort. **Size:** Universal



ME-804

Comfortable wire-free support bra to shape and smooth, with pockets for pads or prostheses. Easy-on step-in design.

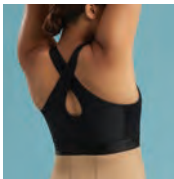
- Wire-free cup support
- Inner cup pockets
- Soft elastic underbust band
- Curvy fit / Use **CURVY** size chart

Sizes: XXS–3X

Available in: **B** **M** **LB**



Back Detail



Strap Detail



ME-813

Designed for all-day support, this deep-V wrap bra is comfortable enough to sleep in.

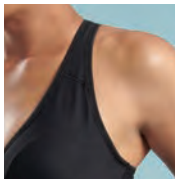
- Flex-fit shaping cup
- Soft, seamless bust
- Racerback
- Soft, elastic band
- Use **SEAMLESS** bra size chart on **page 10** (NOTE: This bra uses bi-cup sizing)

Sizes: 32BC–44DE

Available in: **B** **M**



Back Detail



Strap Detail



ME-803

Beautiful wrap front with plunge neckline. Easy-on, step-in design with no bra needed.

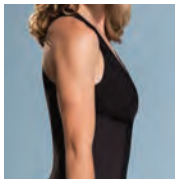
- Wire-free, no-bra cup support
- No-bra option
- Shaping panels
- V-neck with keyhole back
- Curvy fit / Use **CURVY** size chart

Sizes: XXS–XL

Available in: **B** **M** **C**



Back Detail



Side Detail

Step 3 with Marena SHAPE

Points of Measure: Bust, Waist

Size charts on page 51



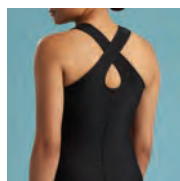
ME-805

Comfortable, open back no-bra camisole with pockets for pads or prostheses. Easy-on step-in design.

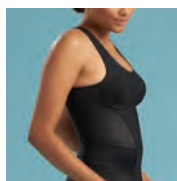
- Wire-free, no-bra cup support
- Inner cup pockets
- Shaping panels
- Scoop neck with keyhole back
- Curvy fit / [Use CURVY size chart](#)

Sizes: XXS-3X

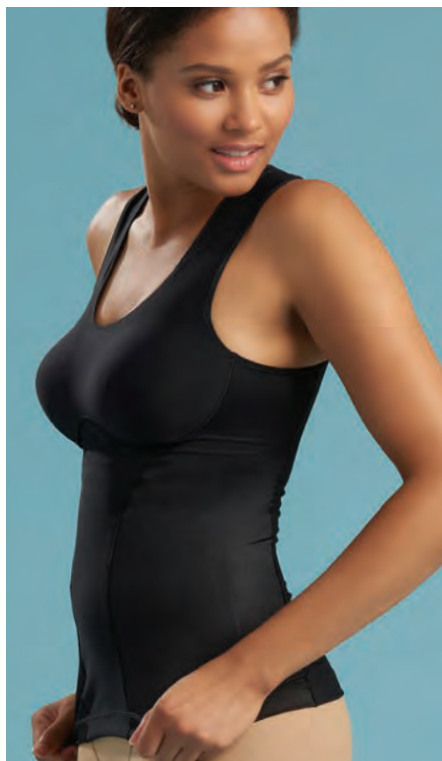
Available in: **B** **M**



Back Detail



Side Detail



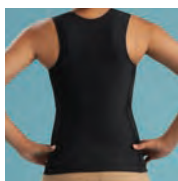
ME-806

Wire-free, no-bra scoop neck camisole for shaping, with pockets for pads or prostheses. Easy-on step-in design.

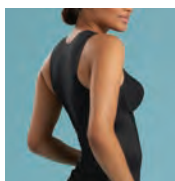
- Wire-free, no-bra cup support
- Inner cup pockets
- Shaping panels
- Scoop neck with full-back coverage
- Curvy fit / [Use CURVY size chart](#)

Sizes: XXS-3X

Available in: **B** **M**



Back Detail



Side Detail



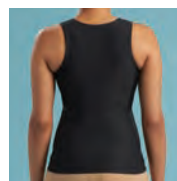
ME-807

Shape and support with no-bra wire-free lift, smooth back and open bust option to pair own bra.

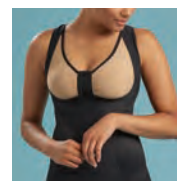
- Wear-your-own-bra option
- Shaping panels
- Full-back coverage
- Curvy fit / [Use CURVY size chart](#)

Sizes: XXS-3X

Available in: **B** **M** **LB**



Back Detail



Front Detail

Stabilizers and Wraps

Points of Measure: Bust

Universal sizing: Fits up to a 48-inch bust



ISB

Recover in comfort and prevent implants from shifting with this lightweight elastic implant stabilizer band. Fits up to a 48-inch bust.



Available in: **B** **W**



ISB2

Prevent implants from shifting with this lightweight implant stabilizer band. Fits up to a 48-inch bust.



Available in: **B** **W**



ISB-05

Recover in comfort and always have a fresh stabilizer band with this ISB 5-pack.



Available in: **W**



ISBX

This implant stabilizer band kit has a center divider to help prevent implants from shifting. Fits up to a 48-inch bust.



Available in: **W**



BW-9

This disposable breast wrap provides protection and support for up to 48-hours. Fits up to a 48-inch bust.



Available in: **W**

Vests and Sleeves

Marena Recovery Vests and Sleeves are designed to provide consistent medical-grade compression to improve comfort after procedures of the chest, upper back, arms and abdomen.

Vests22

Vests with Sleeves.....22-23

Sleeves24

Step 1 & 2

Typical Medical Use:

Brachioplasty, mastopexy, reduction, augmentation and reconstruction mammoplasty

Available Coverage:

Chest, abdomen, back, upper back and arms



Size	Arm	Bust	Under Bust
2XS	8.75-9.5 IN	30-32 IN	23-25 IN
	22-24 CM	76-81 CM	58-64 CM
XS	9.5-10.25 IN	32-34 IN	25-27 IN
	24-26 CM	81-86 CM	64-69 CM
S	10.25-10.75 IN	34-36 IN	27-29 IN
	26-27 CM	86-91 CM	69-74 CM
M	10.75-11.25 IN	36-38 IN	29-31 IN
	27-29 CM	91-97 CM	74-79 CM
L	11.25-12 IN	38-40 IN	31-33 IN
	29-30 CM	97-102 CM	79-84 CM
XL	12-13 IN	40-43 IN	33-36 IN
	30-33 CM	102-109 CM	84-91 CM
2XL	13-14.25 IN	43-47 IN	36-40 IN
	33-36 CM	109-119 CM	91-102 CM
3XL	14.25-15.75 IN	47-51 IN	40-44 IN
	36-40 CM	119-130 CM	102-112 CM
4XL	15.75-17.5 IN	51-55 IN	44-48 IN
	40-44 CM	130-140 CM	112-122 CM

Vests and Vests with Sleeves

Points of Measure: Bust, Underbust, Bicep

Size charts on page 21



FVNS

Heal in comfort with total adjustability and ease of movement during Step One. Fits A-C cups.

- Horizontal seamed cup
- Velcro adjustable shoulder strap
- 3-row hook & eye front closure
- Soft trim elastic band



FVNSZ

Same design as FVNS with zipper front closure. Fits A-C cups.

- Velcro adjustable shoulder strap
- Padded hook & eye zipper front closure
- Soft trim elastic band
- Horizontal seamed cup



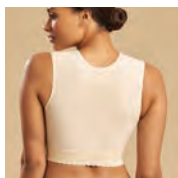
GFVM

Provides arm and back coverage, total adjustability and comfortable cup support and shaping. Fits A-C cups.

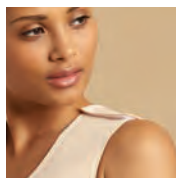
- Seamless cup
- ¾-length sleeve
- 3-row hook & eye front closure
- Soft trim elastic band

Sizes: 2XS-4XL

Available in:



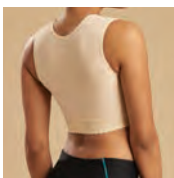
Back Detail



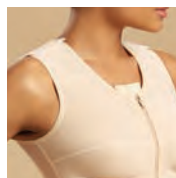
Strap Detail

Sizes: 2XS-4XL

Available in:



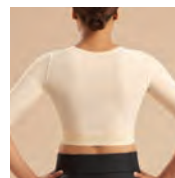
Back Detail



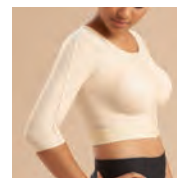
Strap Detail

Sizes: 2XS-4XL

Available in:



Back Detail



Side Detail

Vests with Sleeves

Points of Measure: Bust, Underbust, Bicep

Size charts on page 21



FV2M

Extended torso support, with full back and abdominal coverage, and $\frac{3}{4}$ -length sleeves. Fits A-C cups.

- Full abdominal coverage
- Seamless cup
- $\frac{3}{4}$ -length sleeve
- 3-row hook & eye front closure
- Soft trim elastic band

FV2L

Designed with full-length sleeves with graduated compression to maximize coverage and comfort.

- Graduated compression sleeves
- Seamless cup
- Full abdominal coverage
- 3-row hook & eye front closure
- Soft trim elastic band

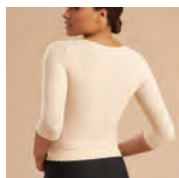
FVOM

Same design as GFVM with open bust option to accommodate larger bust sizes.

- $\frac{3}{4}$ -length sleeve
- Open bust
- 3-row hook & eye front closure
- Soft trim elastic band

Sizes: 2XS-4XL

Available in: **H** **B**

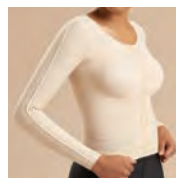


Back Detail

Side Detail

Sizes: 2XS-4XL

Available in: **H** **B**

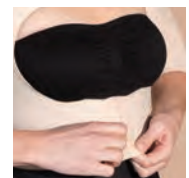


Back Detail

Side Detail

Sizes: 2XS-4XL

Available in: **H** **B**



Back Detail

Front Detail

Sleeves

Points of Measure: Bicep

Size charts on page 21



SM

Easy-on, feather-light sleeves provide medium-length coverage and protect the skin through each step of healing.

- 3-row hook & eye back closure
- $\frac{3}{4}$ -length sleeve



SL

Same design as SM with full sleeve coverage to protect and soften the skin through each step of the recovery journey.

- 3-row hook & eye back closure
- Long sleeve length

Sizes: 2XS–4XL

Available in: **H** **B**



Back Detail



Side Detail

Sizes: 2XS–4XL

Available in: **H** **B**



Back Detail



Side Detail

Body Sculpting Garments

Marena’s patented 4-way stretch fabric provides the healing support of medical-grade compression to help improve comfort, with styles in a variety of lengths and coverage.

Bodysuits.....	26-28
Girdles.....	29-30
Fat Transfer Garments	31
Post-Pregnancy	32
Bodysuits with Bra	33
Step 3 Waist and Thigh Shapers.....	34-35

Steps 1 & 2

Typical Medical Use:

Liposuction, abdominoplasty, Brazilian butt lift, post-pregnancy

Available Coverage:

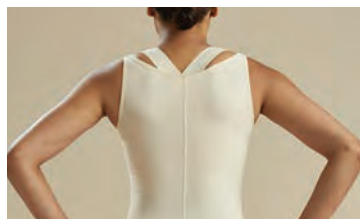
Chest, abdomen, back, upper back, buttocks, arms, and legs



Size	Waist	Hips	Thigh
2XS	22-24 IN	32-34 IN	17.5-18.75 IN
	56-61 CM	81-86 CM	44-48 CM
XS	24-26 IN	34-36 IN	18.75-20 IN
	61-66 CM	86-91 CM	48-51 CM
S	26-28 IN	36-38 IN	20-21.25 IN
	66-71 CM	91-97 CM	51-54 CM
M	28-30 IN	38-40 IN	21.25-22.5 IN
	71-76 CM	97-102 CM	54-57 CM
L	30-32 IN	40-42 IN	22.5-23.75 IN
	76-81 CM	102-107 CM	57-60 CM
XL	32-35 IN	42-45 IN	23.75-25.5 IN
	81-89 CM	107-114 CM	60-65 CM
2XL	35-39 IN	45-49 IN	25.5-27.75 IN
	89-99 CM	114-124 CM	65-70 CM
3XL	39-43 IN	49-53 IN	27.75-30.5 IN
	99-109 CM	124-135 CM	70-77 CM
4XL	43-47 IN	53-57 IN	30.5-33.75 IN
	109-119 CM	135-145 CM	77-86 CM



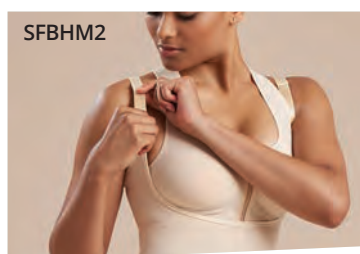
SFBHS



SFBHM



SFBHM2



Complete Comfort, Optimal Results

The SFBH Family of garments offer the most comfortable medical-grade compression to provide superior support and ensure comfort through every step of the process. Hook-and-eye closures make these garments easy to put on and adjust, for full-coverage support and comfort. They are designed for superior fit and adjustability.

Provides Consistent Compression

With high-back coverage, these SFBH garments comfortably smooth bra rolls. Adjustability ensures the correct compression levels can be maintained, even through periods of swelling.

Easy to Put On, Easy to Wear

Hook-and-eye closures make it easy to put on SFBH girdles after surgery and throughout the first step of healing. Slide-adjustable shoulder straps are easy to position so the garment does not bind, pull or pinch.

Adjusts to Any Shape

The 3-row hook-and-eye closures easily adjust to fit size changes due to swelling. The closure can be configured to fit many body types. By hooking different rows, you can create an “hourglass” closure, perfect for narrow waists and wide hips.

Available in 5 lengths – **Bikini** (A), **Short** (S), **Mid-Thigh** (T), **Calf** (M), and **Ankle** (L)

BodySuits: SFBH

Points of Measure: Waist, Hip, Thigh

Size charts on page 25



Hook-&-Eye Closures STEP 1



SFBHA
Bikini-length



SFBHS
Short-length



SFBHT
Mid thigh-length



SFBHM
Calf-length,
Graduated
compression



SFBHL
Ankle-length,
Graduated
compression

No Hook-&-Eye STEP 2



SFBHA2
Bikini-length



SFBHS2
Short-length



SFBHM2
Calf-length,
Graduated
compression



SFBHL2
Ankle-length,
Graduated
compression

SFBH FAMILY

Hook & Eye Front Closure in Step One; Full-Back Coverage; Molded Buttocks; Graduated Compression

- 3-row hook & eye front closure in Step One; no front closure in Step Two
- Molded buttocks
- Graduated compression—SFBHM, SFBHM2, SFBHL, SFBHL2 only

Sizes: 2XS–4XL

Available in: **H** **B**



Back Detail



Strap Detail

BodySuits with Side Closure: FB

Points of Measure: Waist, Hip, Thigh

Size charts on page 25



FB FAMILY

Side Zipper Closure in Step One; Full Back Coverage

- Side-adjustable shoulder strap
- Padded hook & eye zipper side closure
- Open/accessible crotch
- Zipper closure on left and right sides
- FBA—zipper closure on left side.

Sizes: 2XS–4XL

Available in:



Back Detail

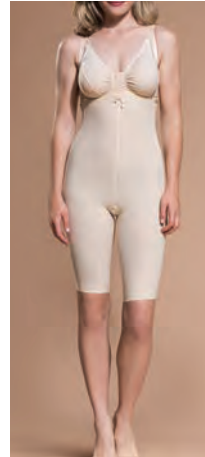


Side Detail

Padded Zipper Closures **STEP 1**



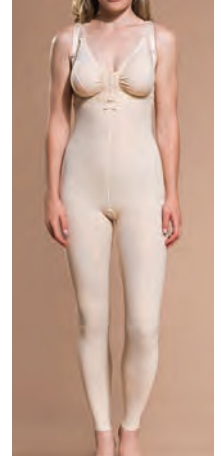
FBA
Bikini-length,
opens to lay flat



FBS
Short-length



FBM
Calf-length

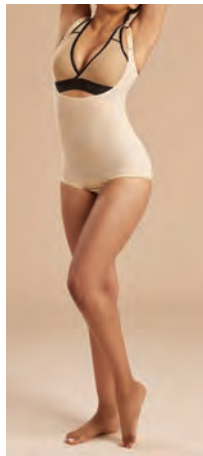


FBL
Ankle-length

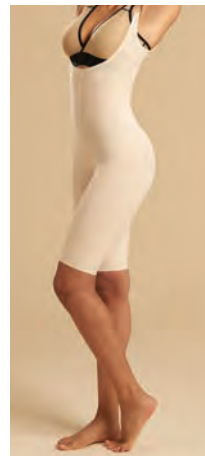
The Perfect Step 2 Solution

With no zippers, high back and 360° body smoothing, the SFBH family offers the best in comfort and continued support for Step 2 healing.

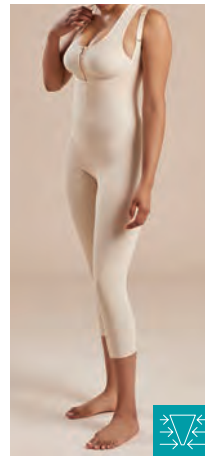
No Hook-&-Eye **STEP 2**



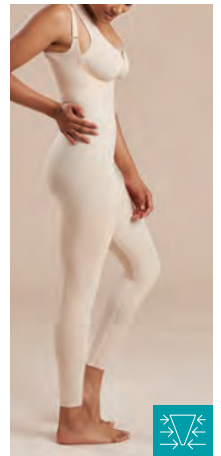
SFBHA2
Bikini-length



SFBHS2
Short-length



SFBHM2
Calf-length,
Graduated
compression



SFBHL2
Ankle-length,
Graduated
compression



SFBHM2

High-Waist Girdles: LG

Points of Measure: Waist, Hip, Thigh

Size charts on page 25



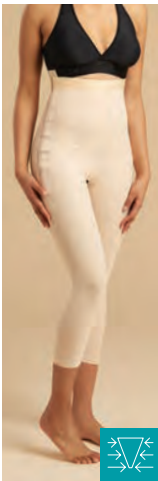
Padded Zipper Closures STEP 1



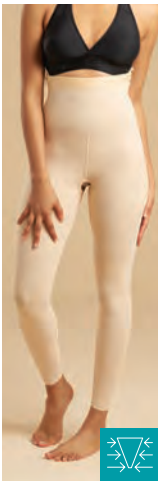
LGA
Bikini-length



LGS
Short-length



LGM
Calf-length,
Graduated
compression



LGL
Ankle-length,
Graduated
compression



LGS-SZ
Short-length,
opens to lay
flat

LG FAMILY

Side Zipper Closure in Step One: High-Waist

- Soft elastic waistband
- Padded hook & eye zipper side closure in Step One; no front closure in Step Two
- Open/accessible crotch
- Left & right zipper closure
- LGA—zipper closure on left side.

Sizes: 2XS–4XL

Available in: **H** **B** **MB**



Back Detail



Side Detail

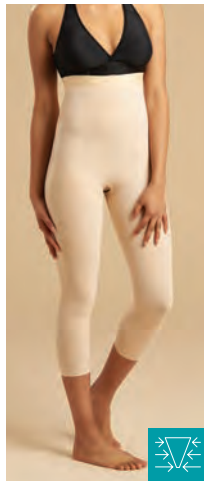
Zipperless STEP 2



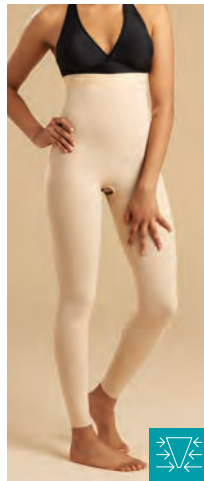
LGA2
Bikini-length



LGS2
Short-length



LGM2
Calf-length,
Graduated
compression



LGL2
Ankle-length,
Graduated
compression

Girdles with Single Side Closure: LL1G

Points of Measure: Waist, Hip, Thigh

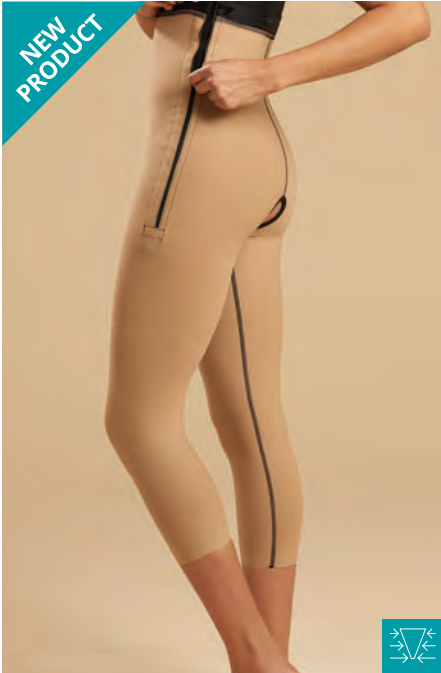
Size charts on page 25



LL1GS STEP 1

Recover in comfort and protect the skin with mid-thigh coverage that provides ease of movement as you heal.

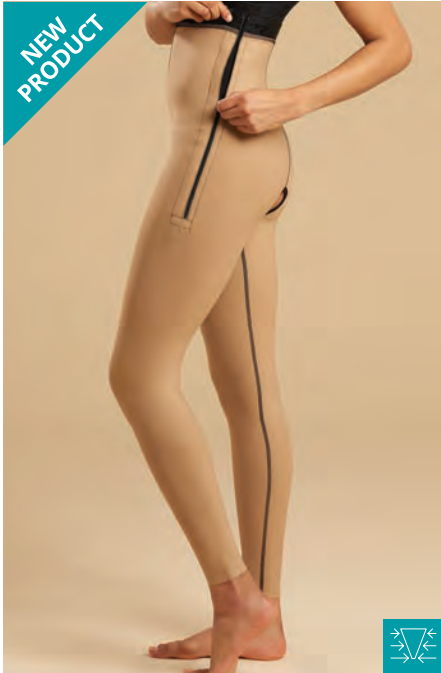
- Soft comfort elastic band
- Side zipper closure on left side
- Open crotch
- Short-length



LL1GM STEP 1

Same design as LL1GS, with extended-leg coverage to support and comfort as you heal.

- Graduated compression
- Soft comfort elastic band
- Side zipper closure on left side
- Open crotch
- Calf-length



LL1GL STEP 1

Protect and soften the skin with full-leg coverage that provides support and comfort as you heal.

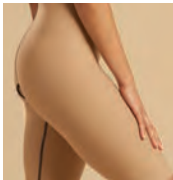
- Graduated compression
- Soft comfort elastic band
- Side zipper closure on left side
- Open crotch
- Ankle-length

Sizes: 2XS–4XL

Available in: H B MB



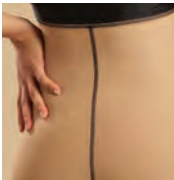
Back Detail



Side Detail

Sizes: 2XS–4XL

Available in: H B MB



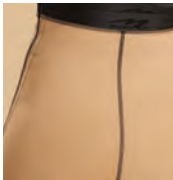
Back Detail



Front Detail

Sizes: 2XS–4XL

Available in: H B MB



Back Detail



Front Detail

Fat Transfer BBL Garments

Points of Measure: Waist, Hip, Thigh

Size charts on page 25



NEW
PRODUCT



FBOS STEP 1

This bodysuit is designed for recovery after Brazilian Butt Lifts and fat transfer procedures. Our new open-buttocks garment combines an infinity edge with a soft, lighter-weight fabric, to help smooth and shape with the benefits of compression. The sacral pads allow doctors to customize fit and definition by adjusting to the size of the transfer.

- Infinity-edge buttock opening
- Sacral foam pad
- Adjustable hook & eye front closure
- Slide-adjustable straps
- Open crotch

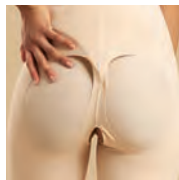
FBOS STEP 1

Designed for recovery after back and buttock procedures, with open buttocks and a sacral pad. The pads allow doctors to customize fit and definition by adjusting to the size of the transfer.

- Slide-adjustable straps
- Padded zipper front closure
- Open crotch
- Calf-length available in FBOM

Sizes: 2XS-4XL

Available in: **H** **B** **MB**



Pad Detail



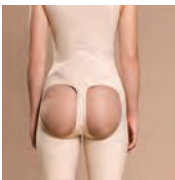
Front Detail



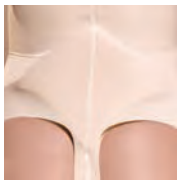
Back Detail

Sizes: 2XS-4XL

Available in: **H** **B**



Back Detail



Pad Detail

Post-Pregnancy Garments

Points of Measure: Waist, Hip, Thigh

Size charts on page 25



PPGA

Our expertly-placed supportive panels smooth and shape your waistline, giving you support and confidence under clothes.

- Slide-adjustable strap
- Accessible crotch opening
- Bikini-length



PPGS

Double and triple support panels smooth and support your waist, hips and thighs. This garment moves with you.

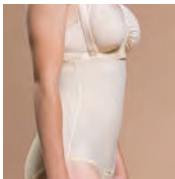
- Slide-adjustable strap
- Open crotch
- Short-length

Sizes: 2XS–4XL

Available in:



Back Detail



Side Detail

Sizes: 2XS–4XL

Available in:



Back Detail



Panel Detail

BodySuits with Bra

Points of Measure: Bust, Underbust, Waist, Hip, Thigh
 Size charts on page 51



FTA STEP 1

Heal in comfort with this full-torso bodysuit. Built-in bra fits A-D cups.

- Built-in bra with horizontal cup seam
- Diagonal 3-row hook & eye front closure
- Wide shoulder strap with hook & eye closure
- Bikini-length

FTS STEP 1

Recover with full-body medical-grade compression support. Built-in bra fits A-D cups.

- Built-in bra with horizontal cup seam
- 3-row hook & eye front closure
- Wide shoulder strap with hook & eye closure
- Short-length

FTRS/SM STEP 1

Reinforced panels add an extra layer of support and protection. Built-in bra fits A-C cups.

- Built-in bra with horizontal cup seam
- Pre-cut drain hole on each side
- 3-row hook & eye front closure
- ¾-length sleeves
- Short-length
- Bikini-length available — FTFA/SM

Sizes: 2XS–4XL

Available in: **H** **B**



Back Detail



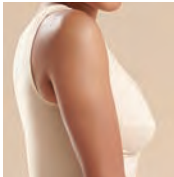
Front Detail

Sizes: 2XS–4XL

Available in: **H** **B**



Back Detail



Side Detail

Sizes: 2XS–4XL

Available in: **H** **B**



Bikini-Length



Sleeve Detail

Step 3 with Marena SHAPE

Points of Measure: Waist, Hips, Thigh

Size charts on page 51



ME-221

Shape and tone with full coverage and abdominal shaping panels that provide everyday comfort.

- Shaping panels
- Full-buttock coverage
- Bikini-length
- Curvy fit / Use **CURVY** size chart



ME-222

Easy-on, high-waist and thigh-slimming design with shaping panels that tone, smooth and hug your curves.

- Long thigh-length
- Shaping panels
- High-waist
- Curvy fit / Use **CURVY** size chart



ME-611

These ultra-comfortable full-length leggings provide graduated compression and smooth your body from waist to ankle.

- Stay-in-Place waistband,
- Soft, comfort knee
- Graduated compression
- 2 -ply closed gusset
- Clean-cut leg finish
- Petite, Regular, Long inseam lengths
- Use **STRAIGHT** size chart

Sizes: XXS-3X

Available in:



Back Detail



Side Detail

Sizes: XXS-3X

Available in:



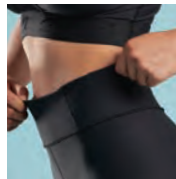
Side Detail

Sizes: XXS-3X

Available in:



Back Detail



Waist Detail

Step 3 with Marena SHAPE

Points of Measure: Bust, Waist, Hips, Thigh

Size charts on page 51

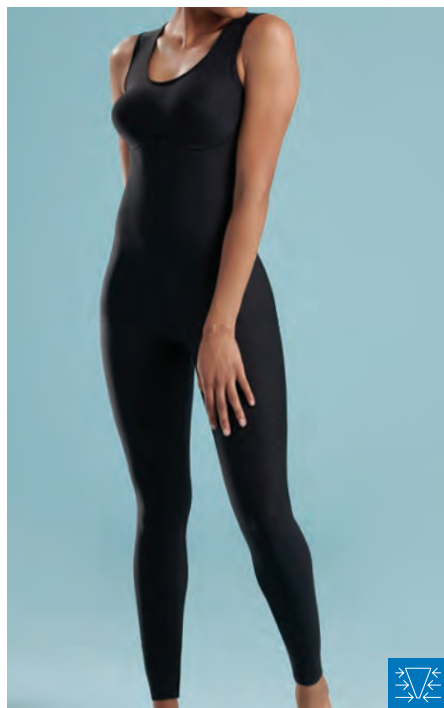
 GRADUATED COMPRESSION



VA-01

Full-coverage bodysuit designed with graduated compression for continued benefits. Works under clothes and as an easy-to-accessorize outfit.

- Graduated compression in legs
- Two-ply fabric w/ molded cup bust
- Insert for optional breast pads
- Full coverage back
- Straight fit / Use **STRAIGHT** size chart



VA-02

Full-coverage sleeveless bodysuit designed with graduated compression for comfortable support under clothes or ready to accessorize for a perfect outfit.

- Graduated compression in legs
- Two-ply fabric w/ molded cup bust
- Insert for optional breast pads
- Full coverage back
- Straight fit / Use **STRAIGHT** size chart



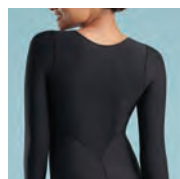
VA-03

Thigh-length sleeveless bodysuit for continued compression benefits that support the abdomen, back and thighs. Smooth under clothes and stays cool and comfortable.

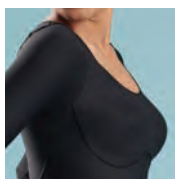
- Two-ply fabric w/ molded cup bust
- Insert for optional breast pads
- Full coverage back
- Straight fit / Use **STRAIGHT** size chart

Sizes: XXS–3X

Available in: **B** **M**



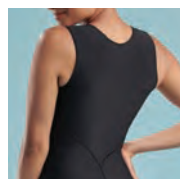
Back Detail



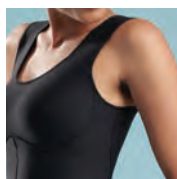
Side Detail

Sizes: XXS–3X

Available in: **B** **M**



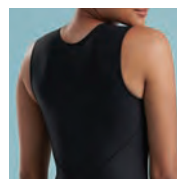
Back Detail



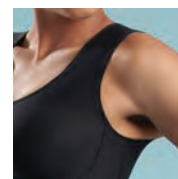
Side Detail

Sizes: XXS–3X

Available in: **B** **M**



Back Detail



Strap Detail

Men's Collections

Recover in comfort. Our men's collections are designed with attention to length, arm movement and finish details to add comfort for longer wear while supporting the body during and after recovery.

Vests & Tops.....	37-39
Girdles.....	40
Bodysuits.....	41
Step 3 with Marena Shape.....	42-43

Step 1 & 2

Typical Medical Use:

Liposuction, abdominoplasty, gynecomasty procedures

Available Coverage:

Chest, abdomen, back, upper back and arms



Size	Arm	Chest	Waist	Hips	Thigh
XS	10.5-11.5 IN 27-29 CM	29-33 IN 74-84 CM	23-27 IN 58-69 CM	29-33 IN 79-84 CM	17.75-20.25 IN 45-51 CM
S	11.5-12.5 IN 29-32 CM	33-37 IN 84-94 CM	27-31 IN 69-79 CM	33-37 IN 84-94 CM	20.25-22.75 IN 51-58 CM
M	12.5-13.5 IN 32-34 CM	37-41 IN 94-104 CM	31-35 IN 79-89 CM	37-41 IN 94-104 CM	22.75-25.25 IN 58-64 CM
L	13.5-14.5 IN 34-37 CM	41-45 IN 104-114 CM	35-39 IN 89-99 CM	41-45 IN 104-114 CM	25.25-27.75 IN 64-70 CM
XL	14.5-15.5 IN 37-39 CM	45-49 IN 114-124 CM	39-43 IN 99-109 CM	45-49 IN 114-124 CM	27.75-30.25 IN 70-77 CM
2XL	15.5-16.5 IN 39-42 CM	49-53 IN 124-135 CM	43-47 IN 109-119 CM	49-53 IN 124-135 CM	30.25-32.75 IN 77-83 CM
3XL	16.5-17.5 IN 42-44 CM	53-57 IN 135-145 CM	47-51 IN 119-130 CM	53-57 IN 135-145 IN	32.75-35.25 IN 83-90 CM
4XL	17.5-18.5 IN 44-47 CM	57-61 IN 145-155 CM	51-55 IN 130-140 CM	57-61 IN 145-155 CM	35.25-37.75 IN 90-96 CM

Men's Vests

Points of Measure: Chest, Waist, Upper Arm

Size charts on page 36



MV/SS STEP 1

For full-torso and upper arm compression, this vest has a wide waistband that stays in place and provides comfort all day.

- Front zipper closure
- Short sleeve
- Soft 3-inch elastic waistband

MV STEP 1

Easy to put on, this vest maximizes adjustability, and features compression for long-lasting comfort.

- Front zipper closure
- Adjustable shoulder closure
- Soft 3-inch elastic waistband
- Sleeveless

MVS STEP 1

This short vest is discreet under clothes, and stays in place after procedures of the chest and back.

- Front zipper closure
- Adjustable shoulder closure
- Soft 3-inch elastic waistband
- Sleeveless, short abdominal length

Sizes: XS–4XL

Available in: **H** **B**



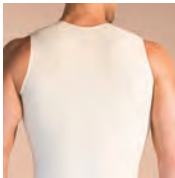
Back Detail



Side Detail

Sizes: XS–4XL

Available in: **H** **B**



Back Detail



Side Detail

Sizes: XS–4XL

Available in: **H** **B**



Back Detail



Side Detail

Men's Vests

Points of Measure: Chest, Waist, Upper Arm

Size charts on page 36



MHV STEP 1

Recover in comfort and protect your torso with a vest that moves with you.

- Front zipper closure
- Adjustable shoulder closure
- Soft, hemmed fabric waistband
- Sleeveless



MHV/SS STEP 1

This easy-on vest disappears under clothes, and provides total comfort through the healing process.

- Smooth/full covered back
- Short sleeve
- Zipper front closure
- Soft, hemmed fabric waistband



MCV/SS STEP 1

Recover in comfort with extended coverage to protect the skin. Smooth hem stays in place.

- Front zipper closure
- Short sleeve
- Soft, hemmed fabric waistband
- Full-back and higher neckline

Sizes: XS–4XL

Available in: **H** **B**



Back Detail



Side Detail

Sizes: XS–4XL

Available in: **H** **B**



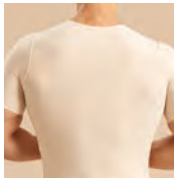
Back Detail



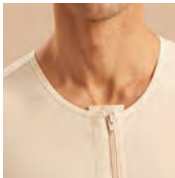
Side Detail

Sizes: XS–4XL

Available in: **H** **B**



Back Detail



Front Detail

Men's Vests

Points of Measure: Chest, Waist, Upper Arm

Size charts on page 36



UV/CP STEP 1

Heal in comfort. This vest features removable loops for drain tubes and POUCH2 for drain bulbs.

- Front zipper closure
- Adjustable shoulder closure
- Soft 3-inch elastic waistband with drain bulb management system
- Includes POUCH2

MTT STEP 2

Smooth, soft and comfortable, this tank top moves with you and is discreet under clothes.

- Sleeveless,
- No closures,
- Full-back coverage,
- Soft 3-inch elastic waistband

MHTT STEP 2

A simple, easy-on, step-in design that pairs well under clothes and provides everyday support and comfort.

- Soft, hemmed fabric waistband
- Sleeveless
- Full-back coverage
- No closures

Sizes: XS-4XL

Available in: **H** **B**

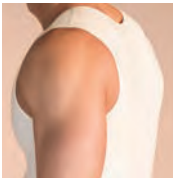


Side Detail

Pouch Detail

Sizes: XS-4XL

Available in: **H** **B**



Back Detail

Side Detail

Sizes: XS-4XL

Available in: **H** **B**



Back Detail

Side Detail

Girdles & Bodysuits

Points of Measure: Chest, Waist, Hip, Thigh, Upper Arm Size charts on page 36



MG STEP 1

This high-waist girdle stays in place for comfortable compression on the abdomen and lower back.

- Front zipper closure
- Soft 3-inch elastic waistband
- Accessible crotch
- Brief-length



MGS STEP 1

With a soft elastic waistband, this girdle stays in place to provide compression support from the abdomen to the thighs.

- Front zipper closure
- Soft 3-inch elastic waistband
- Open crotch
- Thigh-length



MB/SS STEP 1

Recover in comfort with full-body compression levels that protect the skin and provide comfort through each step of healing.

- Front zipper closure
- Open crotch
- Shortsleeve
- Full-back coverage

Sizes: XS–4XL

Available in: **H** **B**



Back Detail



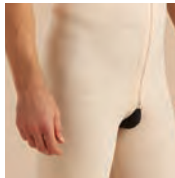
Front Detail

Sizes: XS–4XL

Available in: **H** **B**



Back Detail



Front Detail

Sizes: XS–4XL

Available in: **H** **B**



Back Detail



Sleeve Detail

Men's Bodysuits

Points of Measure: Chest, Waist, Hips, Thigh, Upper Arm Size charts on page 36



MB STEP 1

Heal in comfort—this bodysuit is easy to put on and wear while you recover.

- Sleeveless
- High-back coverage
- Adjustable shoulder closure
- Front zipper closure
- Open crotch

MB2 STEP 2

This bodysuit is easy to put on and wear while you heal.

- Sleeveless
- High-back coverage
- Adjustable shoulder closure
- Zipperless
- Open crotch

MHB2 STEP 2

For the later stages of recovery, this bodysuit is smooth under clothes for continued support.

- Sleeveless
- High-back coverage
- Zipperless
- Open crotch

Sizes: XS–4XL

Available in: **H** **B**



Back Detail



Front Detail

Sizes: XS–4XL

Available in: **H** **B**



Back Detail



Strap Detail

Sizes: XS–4XL

Available in: **H** **B**



Back Detail



Side Detail

Step 3 with Marena SHAPE

Points of Measure: Chest, Waist

Use Men's Shape & Sport size charts—see page 53



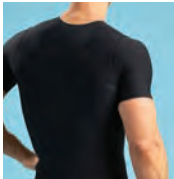
ME-1000 STEP 3

Pair this crew neck option under your top to optimize recovery and ensure everyday comfort.

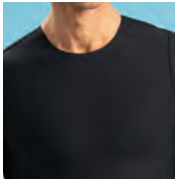
- Crewneck
- Shortsleeve
- Long length

Sizes: 2XS–4XL

Available in:



Back Detail



Front Detail

Step 3 with Marena **SPORT**

Points of Measure: Waist, Hips

Size charts on page 53



ME-1001 STEP 3

Shape and tone. Pair underneath tops to improve posture, feel confident and comfortable.

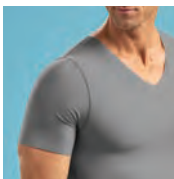
- V-Neck
- Shortsleeve
- Long length

Sizes: 2XS-4XL

Available in:   



Back Detail



Side Detail



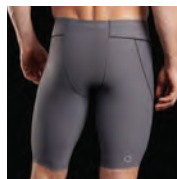
607 STEP 3

This short has a stay-in-place waistband with compression levels to boost performance.

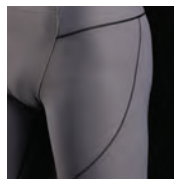
- Stay-in-place waistband
- Action seams to protect and soothe your skin
- Full crotch support

Sizes: 2XS-2XL

Available in:     



Back Detail



Side Detail



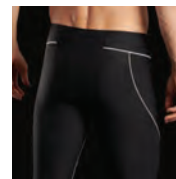
609 STEP 3

Recover in comfort and play like a pro. Features elite-level graduated compression from the ankle.

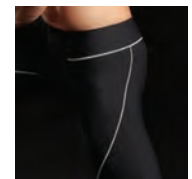
- Graduated compression
- Low stay-in-place waistband
- Full crotch support

Sizes: 2XS-2XL

Available in:     



Back Detail



Side Detail

Unisex Binders

Marena Recovery binders are designed to provide protection and support during the healing process. Our binders are available in solid and split-panel designs for the ultimate comfort during recovery.

Step 1

Typical Medical Use:

Abdominoplasty, abdominal wall reconstruction

Available Coverage:

Abdomen and back



Unisex Binders

Points of Measure: Waist

Universal Sizing: Fits up to a 42 inch waist



AB3

Made of supportive elastic, this binder features a velcro closure.

- 9-inch binder
- Velcro closure
- Soft elastic fabric

Available in:

W

B



AB3S3

Split-panel design with adjustable panels that provide support through each step of healing.

- 9-inch binder with adjustable panels
- Velcro closure
- Soft elastic fabric

Available in:

W



AB3F7

This supportive elastic binder is lined with our ultra-soft patented fabric and features adjustable velcro closure.

- 9-inch binder
- Velcro closure
- Soft elastic fabric with patented fabric lining

Available in:

W

Unisex Binders

Points of Measure: Waist

Universal Sizing: Fits up to a 42 inch waist



AB4

Made of soft, supportive elastic, this 12-inch binder features a velcro closure.

- 12-inch binder
- Velcro closure
- Soft elastic fabric

Available in:

W



AB4S2

Made of supportive elastic, this binder has 2 separating panels with adjustable velcro closures.

- 12-inch binder with adjustable panels
- Velcro closure
- Soft elastic fabric

Available in:

W



AB4F7

This supportive elastic binder is lined with our ultra-soft patented fabric and features adjustable velcro closure.

- 12-inch binder
- Velcro closure
- Soft elastic fabric with patented fabric lining

Available in:

W

Unisex Facial Wear

Promote comfort and healing with medical-grade compression. Marena Recovery face masks come in multiple size options, designed to stay securely in place.

Step 1

Typical Medical Use:
Facial procedures, oral/
maxillofacial surgery

Available Coverage:
Face and neck



Size	Band Size
S	13-15 IN 33-38 CM
M	15-17 IN 38-43 CM
L	17-19 IN 43-48 CM
XL	19-21 IN 48-53 CM

Unisex Facial Wear

Points of Measure: Neck

Size charts on page 53



FM100-A

Recover in comfort with the benefits of compression. This mask has a velcro closure and chin support.



Available in:  Sizes: S-XL



FM100-B

Recover in comfort with the benefits of compression. This mask has a velcro closure and mid-neck coverage.



Available in:  Sizes: S-XL



FM100-C

Recover in comfort with the benefits of compression. This mask has a velcro closure and full neck coverage.



Available in:  Sizes: S-XL



FM300-A

Recover in comfort with the benefits of compression. This mask has a velcro closure and short neck coverage.



Available in:  Sizes: S-XL

Unisex Facial Wear

Points of Measure: Neck

Size charts on page 53



FM300-B

Recover in comfort with the benefits of compression. This mask has a velcro closure and mid-neck coverage.



Available in: **H** Sizes: S-XL



FM300-C

Recover in comfort with the benefits of compression. This mask has a velcro closure and full neck coverage.



Available in: **H** Sizes: S-XL



FM400

Universal-sized, soft elastic face wrap has velcro closures and 3 pockets with hot and cold packs.



Available in: **W** Size: Universal



FM410

Recover in comfort with this universal-sized, soft elastic face wrap with velcro closures for easy adjustment.



Available in: **W** Size: Universal



FM500

Recover in comfort with the benefits of compression. This mask has a velcro closure and full face & neck support.



Available in: **H** Sizes: S-XL

How to Ensure the Best Fit

To ensure the best fit and optimal compression results while wearing our garments, follow these sizing guidelines to determine your correct size.

Bust

Measure at the widest point of the bust.

Under Bust

Measure directly underneath the bust.

Hips

Measure the fullest part of the hips and buttocks.

Calf

Measure at the widest point of the calf while relaxed.

Arm

Measure at the widest point of the arm while relaxed.

Waist

Measure at the navel, between the lowest rib and hips, identified by bending the body to the side.

Thigh

Measure the widest point of the thigh, near the crotch.

Women's Size Charts

See size charts on page 10 for bra size charts.

Women's Recovery

Size	2XS	XS	S	M	L	XL	2XL	3XL	4XL
Arm	8.75-9.5 IN 22-24 CM	9.5-10.25 IN 24-26 CM	10.25-10.75 IN 26-27 CM	10.75-11.25 IN 27-29 CM	11.25-12 IN 29-30 CM	12-13 IN 30-33 CM	13-14.25 IN 33-36 CM	14.25-15.75 IN 36-40 CM	15.75-17.5 IN 40-44 CM
Bust	30-32 IN 76-81 CM	32-34 IN 81-86 CM	34-36 IN 86-91 CM	36-38 IN 91-97 CM	38-40 IN 97-102 CM	40-43 IN 102-109 CM	43-47 IN 109-119 CM	47-51 IN 119-130 CM	51-55 IN 130-140 CM
Under Bust	23-25 IN 58-64 CM	25-27 IN 64-69 CM	27-29 IN 69-74 CM	29-31 IN 74-79 CM	31-33 IN 79-84 CM	33-36 IN 84-91 CM	36-40 IN 91-102 CM	40-44 IN 102-112 CM	44-48 IN 112-122 CM
Waist	22-24 IN 56-61 CM	24-26 IN 61-66 CM	26-28 IN 66-71 CM	28-30 IN 71-76 CM	30-32 IN 76-81 CM	32-35 IN 81-89 CM	35-39 IN 89-99 CM	39-43 IN 99-109 CM	43-47 IN 109-119 CM
Hip	32-34 IN 81-86 CM	34-36 IN 86-91 CM	36-38 IN 91-97 CM	38-40 IN 97-102 CM	40-42 IN 102-107 CM	42-45 IN 107-114 CM	45-49 IN 114-124 CM	49-53 IN 124-135 CM	53-57 IN 135-145 CM
Thigh	17.5-18.75 IN 44-48 CM	18.75-20 IN 48-51 CM	20-21.25 IN 51-54 CM	21.25-22.5 IN 54-57 CM	22.5-23.75 IN 57-60 CM	23.75-25.5 IN 60-65 CM	25.5-27.75 IN 65-70 CM	27.75-30.5 IN 70-77 CM	30.5-33.75 IN 77-86 CM

Women's Shape Straight

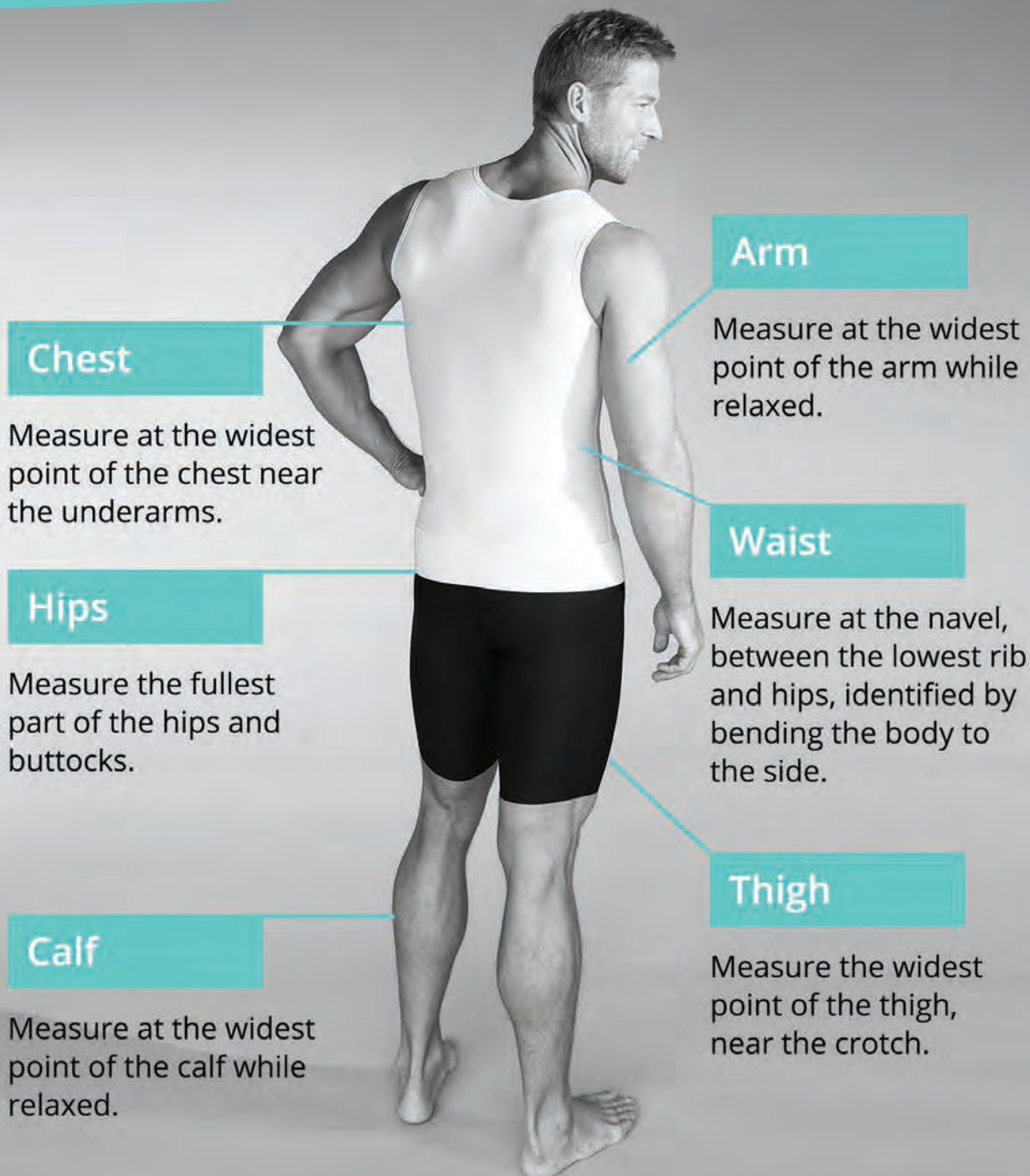
Size	XXS	XS	S	M	L	XL	1X	2X	3X
Bust	33 IN 84 CM	34 IN 86.75 CM	35.25 IN 89.5 CM	36.25 IN 92 CM	37.25 IN 94.5 CM	38.75 IN 98.5 CM	40.25 IN 102.5 CM	42 IN 107 CM	44 IN 112 CM
Waist	27 IN 68.25 CM	27.75 IN 70.25 CM	28.5 IN 72.5 CM	29.5 IN 75 CM	30.5 IN 77.5 CM	32.25 IN 82 CM	34 IN 86.25 CM	36 IN 91.5 CM	38.25 IN 97 CM
Hip	35 IN 89.25 CM	36.5 IN 92.5 CM	37.5 IN 95.25 CM	38.5 IN 97.75 CM	39.5 IN 100.25 CM	41 IN 104 CM	42.5 IN 108 CM	44.25 IN 112.5 CM	46 IN 117 CM
Thigh	21 IN 53 CM	21.25 IN 54 CM	21.75 IN 55.25 CM	22.25 IN 56.5 CM	22.75 IN 57.75 CM	23.5 IN 60 CM	24.5 IN 62.25 CM	25.75 IN 65.5 CM	27 IN 68.5 CM

Women's Shape Curvy

Size	XXS	XS	S	M	L	XL	1X	2X	3X
Bust	33 IN 84 CM	34 IN 87 CM	35 IN 90 CM	36 IN 92 CM	37 IN 95 CM	39 IN 98 CM	40 IN 103 CM	42 IN 107 CM	44 IN 112 CM
Waist	25.25 IN 64.5 CM	26 IN 66.25 CM	27 IN 68.5 CM	28 IN 71 CM	29 IN 73.5 CM	30.75 IN 78 CM	32.5 IN 82.5 CM	34.5 IN 87.5 CM	36.75 IN 93.25 CM
Hip	36 IN 91 CM	37 IN 94.25 CM	38.25 IN 97 CM	39.25 IN 99.75 CM	40.25 IN 102.25 CM	41.75 IN 106 CM	43.25 IN 110 CM	45 IN 114.25 CM	46.75 IN 118.75 CM
Thigh	21.25 IN 54 CM	21.5 IN 55 CM	22 IN 56 CM	22.5 IN 57.5 CM	23 IN 58.75 CM	24 IN 61 CM	25 IN 63 CM	26.25 IN 66.75 CM	27.5 IN 70 CM

What to Expect

Everyone experiences the feeling of compression differently, but you should not feel uncomfortable. With the right fit, compression garments gently massage the body. The seams are sewn on the outside of the garment for comfort.



Chest

Measure at the widest point of the chest near the underarms.

Arm

Measure at the widest point of the arm while relaxed.

Waist

Measure at the navel, between the lowest rib and hips, identified by bending the body to the side.

Hips

Measure the fullest part of the hips and buttocks.

Thigh

Measure the widest point of the thigh, near the crotch.

Calf

Measure at the widest point of the calf while relaxed.

Men's Size Charts

Men's Recovery

Size	XS	S	M	L	XL	2XL	3XL	4XL
Arm	10.5-11.5 IN 27-29 CM	11.5-12.5 IN 29-32 CM	12.5-13.5 IN 32-34 CM	13.5-14.5 IN 34-37 CM	14.5-15.5 IN 37-39 CM	15.5-16.5 IN 39-42 CM	16.5-17.5 IN 42-44 CM	17.5-18.5 IN 44-47 CM
Chest	29-33 IN 74-84 CM	33-37 IN 84-94 CM	37-41 IN 94-104 CM	41-45 IN 104-114 CM	45-49 IN 114-124 CM	49-53 IN 124-135 CM	53-57 IN 135-145 CM	57-61 IN 145-155 CM
Waist	23-27 IN 58-69 CM	27-31 IN 69-79 CM	31-35 IN 79-89 CM	35-39 IN 89-99 CM	39-43 IN 99-109 CM	43-47 IN 109-119 CM	47-51 IN 119-130 CM	51-55 IN 130-140 CM
Hip	29-33 IN 79-84 CM	33-37 IN 84-94 CM	37-41 IN 94-104 CM	41-45 IN 104-114 CM	45-49 IN 114-124 CM	49-53 IN 124-135 CM	53-57 IN 135-145 IN	57-61 IN 145-155 CM
Thigh	17.75-20.25 IN 45-51 CM	20.25-22.75 IN 51-58 CM	22.75-25.25 IN 58-64 CM	25.25-27.75 IN 64-70 CM	27.75-30.25 IN 70-77 CM	30.25-32.75 IN 77-83 CM	32.75-35.25 IN 83-90 CM	35.25-37.75 IN 90-96 CM

Men's Sport and Shape

Size	2XS	XS	S	M	L	XL	2XL	3XL	4XL
Chest	32 IN 81.25 CM	34 IN 86.5 CM	36 IN 91.5 CM	38 IN 96.5 CM	40 IN 101.75 CM	42 IN 106.75 CM	44 IN 111.75 CM	46 IN 117 CM	48 IN 122 CM
Waist	26 IN 66 CM	28 IN 71 CM	30 IN 76.25 CM	32 IN 81.25 CM	34 IN 86.5 CM	36 IN 91.5 CM	38 IN 96.5 CM	40.5 IN 103 CM	43 IN 109.25 CM
Hip	32 IN 81.25 CM	34 IN 86.5 CM	36 IN 91.5 CM	38 IN 96.5 CM	40 IN 101.75 CM	42 IN 106.75 CM	44 IN 111.75 CM	46 IN 117 CM	48 IN 122 CM
Thigh	19.5 IN 49.5 CM	20.75 IN 52.75 CM	22 IN 56 CM	23.25 IN 59 CM	24.5 IN 62.25 CM	25.75 IN 65.5 CM	27 IN 68.5 CM	28.25 IN 71.75 CM	29.5 IN 75 CM

Unisex Size Charts

Facial Wear



Neck

Measure at the widest point of the neck

Size	Band Size
S	13-15 IN 33-38 CM
M	15-17 IN 38-43 CM
L	17-19 IN 43-48 CM
XL	19-21 IN 48-53 CM

Garment Care

To preserve the special qualities of your garment and its patented fabric, please follow these UPDATED, no-hassle laundering instructions:

Marena patented fabric is made of 51% TACTEL® Nylon and 49% SOFT LYCRA®.



How to Put on Marena Garments

For styles covering the face or part of the face:

1. Place the chin in the chin cup (located with the vertical seam).
2. Close the velcro closure over the head, about 2" behind the forehead.
3. Close the second velcro closure behind the neck.

For styles covering the chest and/or arms:

1. Make sure the size label is on the inside of the garment, in the back.
2. With the garment completely open, slide each arm into the arm holes/sleeves.
3. Close the hooks/zipper. The middle row is usually the best fit for hook-and-eye closures.
4. The shoulder straps, if applicable, may be adjusted as needed.

For garments covering the mid and lower body:

1. Make sure the size label is on the inside of the garment, in the back.
2. Open zipper(s) and/or all of the hooks (if applicable).
3. Place your feet into the leg openings and gently pull the garment up your legs as if you were putting on pantyhose (be careful with sharp fingernails).
4. Align crotch opening as you pull the garment up (if applicable).
5. If the garment has shoulder straps, slide onto each arm and adjust them for best fit.



We Make Ordering Easy!

In the USA 

Online: MarenaGroup.com

Phone: TOLL FREE: **1-888-462-7362 (1-888-4MARENA)** or **770-822-6925**

It is our pleasure to take your phone orders 8:00AM–7:00PM EST.

E-mail: orders@marenagroup.com

Fax: 678-802-6371

International

Please contact your local distributor or visit

marenagroup.com/about/international to find a distributor near you.



Return Policy

Return Information

Merchandise ordered in error may be returned in original unopened packaging. No credit will be given for merchandise after 30 days of receipt.

We guarantee all garments to be free from manufacturing flaw or defect prior to use. Due to government regulations, any Marena garment that has been worn for any length of time cannot be returned unless defective. Please call Marena Customer Care at **1-888-4-MARENA** immediately to report any defects.

A Return Authorization (RA) must be obtained before goods may be returned. To obtain one, contact Customer Care at **1-888-4-MARENA**. Please have your order number available.

All returns are subject to a 10% restocking fee.

Customers are responsible for shipping products back to the Marena warehouse.

Items must be returned within 10 working days from date of RA issuance.

Credit will be issued based on the invoice amount for the value of the merchandise only, less any applicable restocking fees.

Quality Inspections are performed within 10 business days of receiving a returned garment.

How to Return Your Garment

Review the return policy at left to ensure your garment is eligible for return.

Contact the Customer Care Team at **1-888-4-MARENA** or email returns@marenagroup.com to initiate a return request.

Once your RA number has been issued, return it for processing at the following address:

The Marena Group
ATTN: Returns Department
650 Progress Industrial Blvd.
Lawrenceville, GA 30043

We recommend selecting a shipping method with tracking, and retaining your tracking number until return is confirmed as received at Marena.

For additional questions or assistance, please contact the Marena Customer Care Team at **1-888-4-MARENA** or email returns@marenagroup.com.

Exchanges

Marena does not offer product exchanges. If a replacement garment is desired, please place a new order, and initiate a return request for your current garment separately. This way you will receive your new garment as quickly as possible.



The Healing Power of Compression

Medical research, since the 1970s, has shown that medical-grade compression garments aid the body's healing process from procedures that cause trauma to the body.

Marena Primary Medical Benefits

- Helps reduce swelling
- Helps support the skin during healing to improve softness and smoothness
- Helps reduce pain
- Helps reduce bruising

Marena Recovery offers exclusive, patented medical-grade compression garments to **help you recover in comfort.**

"External compression promotes the flow of tissue fluid that naturally accumulates in an area of surgical trauma, back to the (body's) general circulation through the lymphatic channels."

– Dr. Paul Fortes, MD
Board-Certified Plastic Surgeon, Houston, TX

Marena compression garments are preferred by 8 out of 10 patients and are recommended by 5,000+ medical professionals worldwide.

Learn more at patientpreferred.com.

Fabric Innovation

Marena's 4-Way Stretch Advantage

Warp knits are engineered and interwoven in precision loops to form an X-weave that maintains nearly perfect levels of controlled compression. Our exclusive weave uses fibers that are wrapped so they are softer on the skin than most stretch fibers like those in power net.

Outside

Moisture Control

Our fabric is certified by COOLMAX® moisture management to wick away moisture to keep you cool and dry.

Durability

Our exclusive, patented fabric means our garments are durable, retain their shape, stay in place, and do not run. Designed to be comfortable all day, every day.

Sun Protection

We protect the body against the sun's harmful rays with UPF 50 protection as a feature of the Marena fabric. Play longer, with confidence.

Our Fabric

- Uses 360° force that supports and stays in place
- Does not bind or restrict movement
- Holds shape and power after washing
- Allows full range of motion

Inside

Power Stretch

4-Way Stretch™ ensures that a comfortable, personal fit can be combined with medical-grade compression. Our garments move with you, to provide consistent compression.

Better for Skin

Our fabric is free of most common irritants. Feel your best with peace of mind.

Superior Softness

Our patented fabric is crafted from premium yarns that are incredibly soft against the body for long-term comfort. SOFT LYCRA® wrapped around TACTEL NYLON® makes for a smooth and flexible fit.

Consistent Compression

Marena's garments were shown to hold their shape and retain power and stretch longer than leading competitors.*

We washed our garment against leading competitors 10 times, then stretched each 40% for 32 hours.



10 washes



40% stretching



32 hours

Marena Recovery showed **almost no change** to its shape or compression power.

-0.33% elongation, -2.39% change in power

Texas-Based Compression
Garment Provider

Sample **lost 15.8%**
compression power

-0.16% elongation
-15.8% change in power

Czech Republic-Based Compression
Garment Manufacturer

Sample **became rigid**

1.99% elongation
20.83% change in power

California-Based Compression
Garment Manufacturer

Sample **lost 12.8%**
compression power

-3.44% elongation
12.8% change in power

Recover in Comfort

During recovery, effective wicking and moisture control are essential to prevent bacterial growth and eliminate odor. Marena's fabric is Coolmax rated to wick moisture away from the skin. Our patented fabric is treated with Silvadur™ and is free of common irritants.



*Results compiled from independent testing conducted at North Carolina State University, 2007-2012.



For more information on the power and
benefits of medical-grade compression,
visit marenarecovery.com



Marena Delivers the Best in Comfortable Compression

Our mission is to help patients around the world **heal in comfort, recover with confidence** and **live better**. But at the heart of the Marena mission—what we do and why we do it—is **the customer**.

Made in the USA, with heart.



#marenacares

Our company actively supports local and national programs as well as breast cancer and lymphedema research.

ISO 9001 & 13485 Certified



90-2009
2nd Edition 09-2018

The Marena Group, LLC
650 Progress Industrial Blvd
Lawrenceville, GA 30043
1-888-462-7362

www.marengroup.com

**MADE
IN THE
USA★**